

deeper

# WHICH DEEPER FISH FINDER IS BEST FOR YOU?



## DEEPER START

IDEAL FOR SHORE ANGLERS WHO WANT A SIMPLE, POWERFUL AND AFFORDABLE FISH FINDER TO HELP THEM CATCH MORE



## DEEPER PRO SERIES

A GREAT OPTION FOR ICE FISHING, AND FOR KAYAK AND BOAT ANGLERS WHO WANT TO FIND FISH AND MAP THE LAKES THEY FISH. ALSO GREAT FROM THE SHORE

## FISHING TYPES

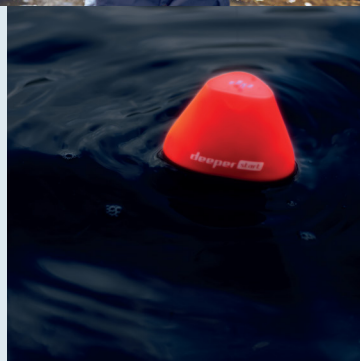
### SHORE FISHING



### BOAT FISHING

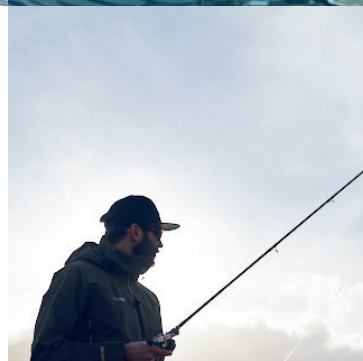


### KAYAK FISHING



### NIGHT FISHING

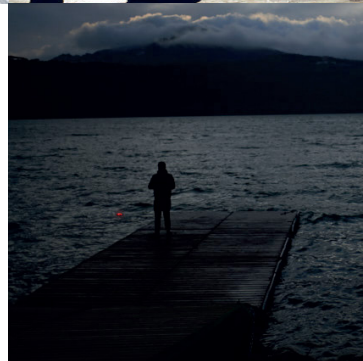
### SHORE FISHING



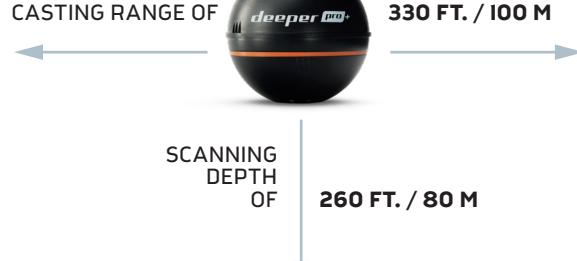
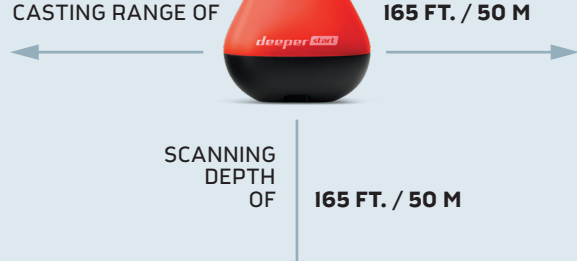
### ICE FISHING



### NIGHT FISHING



## WHAT FEATURES AND TECHNOLOGY DOES EACH MODEL HAVE?



### CONNECTION

WIFI

WIFI

### SONAR TYPE

SINGLE BEAM 120 KHZ, 40° SONAR FOR GOOD DETAIL AND AREA COVERAGE

DUAL BEAM SONAR FOR DETAILED SCANNING (290KHZ 15°) AND WIDE AREA COVERAGE (90KHZ 55°)

### SCANNING

UP TO 10 SCANS PER SECOND FOR ACCURATELY MARKING FISH

UP TO 15 SCANS PER SECOND FOR GREAT DETAIL AND SMOOTH TROLLING

### TARGET SEPARATION

2.5 CM / 0.9"

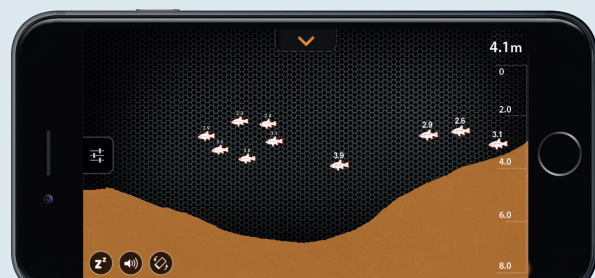
1.3 CM / 0.5"

### CHARGING

MAGNETIC CHARGING CABLE FOR EXTERNAL CHARGING

UNSCREW CAP TO CHARGE

## DISPLAY



## CASTING



65 g / 2.3 oz

**LIGHTER WEIGHT** FOR EVEN EASIER CASTING

CAST OUT USING **VIRTUALLY ANY LINE** AND A RANGE OF DIFFERENT RODS

THE START'S NEW DESIGN MAKES IT **SUPER EASY TO REEL IN**, AND FEATURES AN INBUILT, AUTOMATICALLY ACTIVATED LED FOR GREAT VISIBILITY IN ALL CONDITIONS



100 g / 3.5 oz

CAST OUT USING **VIRTUALLY ANY LINE** AND A RANGE OF DIFFERENT RODS

ALL OUR SONARS ARE TESTED TO CAST USING LINE FROM 6LBS / 2.7KG TEST MONOFILAMENT UP TO 20LBS / 9KG TEST BRAIDED LINE

## DATA

1.

**ALL DATA BACKED UP** ON OUR CLOUD SERVER SO YOU NEVER LOSE IT

2.

**HISTORY MODE** FOR VIEWING ALL SCANS: ALL SAVED SCANS HAVE LOCATION, DATE, TIME

3.

**VIEW YOUR SCANS ON ANY COMPUTER USING LAKEBOOK™**, THEN SHARE THE BEST ONES WITH YOUR FISHING BUDDIES

### MAPPING / GPS

USE YOUR PHONE'S GPS TO MARK AND SAVE HOTSPOTS WITH NOTES

### MAPPING / GPS

CREATE BATHYMETRIC MAPS BY TROLLING FROM BOAT OR KAYAK

### PRO + ONLY:

CREATE BATHYMETRIC MAPS BY CASTING FROM SHORE USING **INBUILT GPS**



DEEPERSONAR.COM